

**ENVI**  
**ENHANCED NETWORK**  
**VIDEO INTEGRATION**



**IPcctv**  
 MegaPixel CCTV Over IP Networks



**FEATURES:**

- 1/3" 1.3 & 2.0 Megapixel Progressive Scan CMOS image sensor
- Integrated 850nm Infrared LEDs with up to 150' Range
- Up to 30fps live view @ 1920x1080p (2.0 MegaPixel Models) / 1280x720p (1.3 MegaPixel Models)
- 2.8-10mm Varifocal DC Auto Iris IR Lens
- 3D-DNR Noise Reduction
- 16:9 Video format
- Auto True Day Night (TDN) without focus shift is achieved with dual filter switch function
- H.264/MJPEG Dual Streaming
- Full duplex 2 way audio via built-in audio In/Out
- Minimal Latency with up to 16 User Connections
- Onvif Compliance
- SD Memory Card slot for Local recording
- Dual Glass Compartments to Eliminate Glare
- Heavy Duty IP68 rated weather/vandal resistant aluminum construction
- Secondary Video Output & OSD Control Joystick are accessible inside a Gasket sealed removable side panel
- Externally adjustable Focus & Zoom with clutch to eliminate over-tightening
- 12VDC/24VAC & PoE (Power over Ethernet) Operation

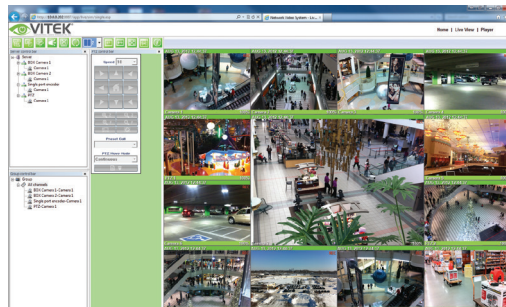
The all New VITEK ENVI Series IP cameras and Network devices hold true to our continued commitment to Innovation and Technology while offering the Value and simplicity that has become synonymous with our brand.

ENVI Series IP Products are all ONVIF compliant in addition to their direct integration with some of the industry's leading brands including Video Insight, AXXON, LuxRiot, ONSSI, Milestone, Genetec, and many more!

The VITEK ENVI Series Outdoor 1.3 & 2.0 Megapixel IP Cameras offer an IP68 Weather/Vandal Resistance Rating and deliver real time live video up to 30fps @ 1920x1080p over a TCP/IP Network. Crystal clear images are achieved without tearing by use of a progressive scan CMOS image sensor. Minimal network bandwidth and storage space is needed due to the most advanced H.264 Video Compression algorithm. Motion JPEG is also supported for maximum flexibility and integration possibilities. All ENVI cameras also offer **EDGE Recording** with onboard SD or MicroSD card slots for on camera backup with remote access & playback.



**ENVI Mobile App**  
 ENVI Remote Viewing App for iPad/iPhone & Android Devices



Web based interface.



Specifications	
Image Device	1/3" Progressive Scan CMOS
Resolution (1.3MP)	1.3 MegaPixel (1280x720p)
Resolution (2.0MP)	2.0 MegaPixel (1920x1080p)
Video Format	16:9
Video Encoding	H.264 / MJPEG dual streaming
Frame Rate	30fps max
Lens Options	MegaPixel 2.8-10mm (Varifocal)
IR LEDs (Built-In)	40 850nm IR LED's with up to 150' Range
Day/Night	True Day/Night by ICR
Noise Reduction	3D-DNR
Water Resistance	IP-68
Memory Card	Standard SD - up to 64GB
Connectivity	Up to 16 simultaneous user connections
Audio	2-Way full duplex
PoE	YES
Power Source	12VDC/24VAC
Power Consumption (12VDC)	540mA (IR OFF) / 1A (IR ON)
Power Consumption (24VAC)	320mA (IR OFF) / 530mA (IR ON)
Power Consumption (PoE)	13W
Operating Conditions	-10°-50°C (14°-122°F) < 80% RH
Dimensions	4.375" x 9.5" x 6"
Weight	2.65 lbs. (1202g)



SD Memory Card Slot, Secondary Video Output & OSD Control Joystick are accessible inside a Gasket sealed removable side panel.



Gasket sealed externally adjustable Focus & Zoom with clutch to eliminate over-tightening.



Dual Glass Compartments to Eliminate Glare.



**AVAILABLE CONFIGURATIONS**

VTC-IR401/210NP	1.3 MegaPixel IR Bullet w/2.8-10mm Lens & PoE
VTC-IR402/210NP	2.0 MegaPixel IR Bullet w/2.8-10mm Lens & PoE

**BREAKDOWN OF MODEL NUMBERS:**

**EXAMPLE: VTC-IR401/210NP**

{VTC}	{IR40}	{1}	{210}	{N}	{P}
VITEK Camera	40 IR LEDs	1.3 MP Camera	2.8-10mm Varifocal Lens	Network (IP)	PoE (Power over Ethernet)

