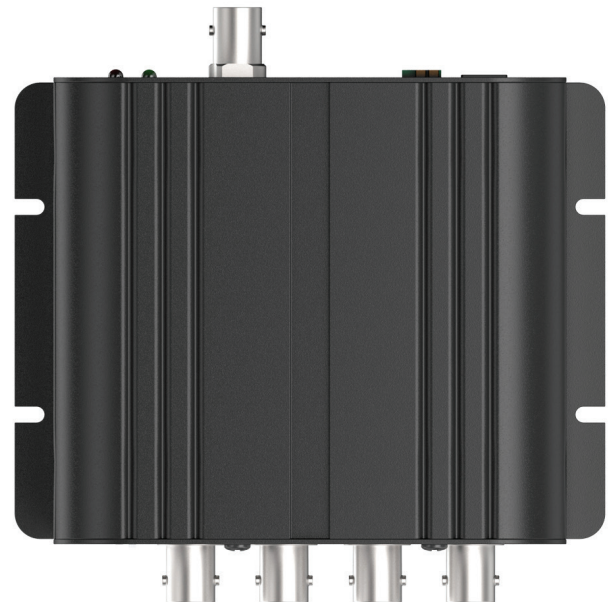




The VT-QHD4 is a 4 Channel Analog interface that allows up to 4 Analog cameras to be added in quadrants per HD channel to an On Cue High Definition security system. The perfect way to infuse additional channels into your system without having to purchase an additional or higher capacity DVR.

FEATURES

- 960H Quad Splitter
- 4 Inputs: 960H, 720H or SD per Input
- 2 Outputs: 1 HDMI and 1 HD-SDI
- Output: HDMI : Only 1080p 60
HD-SDI: 1080p 60 & 30
- 75Ω Impedance Input & Output (Error Range: $\pm 1\%$)
- Repower is required after adjusting the dip switch (NTSC/PAL & HDMI/HD-SDI)



Detailed Specifications

SYSTEM	960H Quad Splitter
VIDEO SYSTEM	NTSC, PAL
VIDEO INPUT	4 BNC
INPUT FORMAT	SDTV (960 × 480 / 576)
VIDEO OUTPUT	1 HDMI Output (HDMI v1.3) and 1 HD-SDI Output (SMPTE 292M)
VIDEO MODE	4 Channel layout
OUTPUT FORMAT	HDMI 1080p 60 or HD-SDI 1080p 30
POWER INPUT	Free Voltage 12VDC, 1A
HDMI CONNECTOR	HDMI Female
RS485 CONNECTOR	RS485 – Terminal Block
HD-SDI CONNECTOR	BNC Female
DIMENSION	4.49" x 3.53" x 1.36" (114mm x 89.6mm x 34.5mm)



#	Function	Description
1	NTSC or PAL SELECT	Select NTSC or PAL mode
2	HDMI or HD-SDI SELECT	Select HDMI or HD-SDI
3	960H INPUT 1	960H or SD Camera Input (1ch)
4	960H INPUT 2	960H or SD Camera Input (2ch)
5	960H INPUT 3	960H or SD Camera Input (3ch)
6	960H INPUT 4	960H or SD Camera Input (4ch)
7	DC-IN POWER	DC 12V, 1A Adaptor
8	RS-485 IN & OUT	RS-485 Terminal Block (Reserved)
9	HDMI OUT	HDMI Output Connection
10	HD-SDI OUT	HD-SDI Output Connection
11	ACTIVE LED	Green LEDs signal which video signal inputs are ON
12	POWER LED	Red LED signals Power ON/OFF