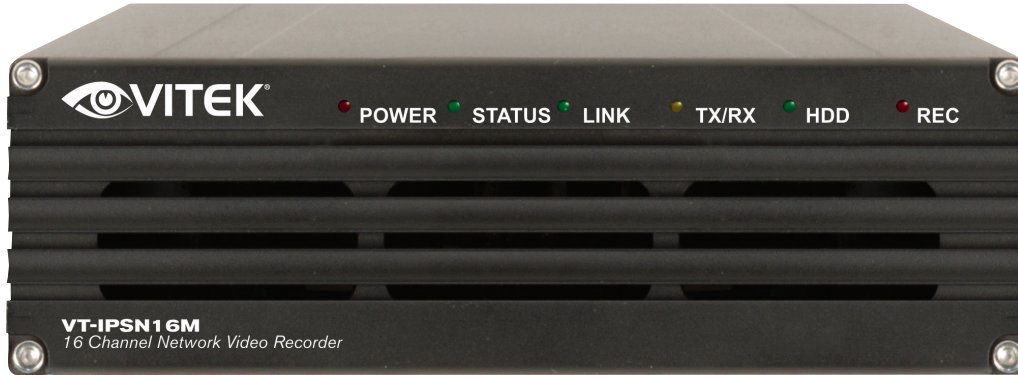


**ENVI**  
ENHANCED NETWORK  
VIDEO INTEGRATION



**IPcctv**  
MegaPixel CCTV Over IP Networks



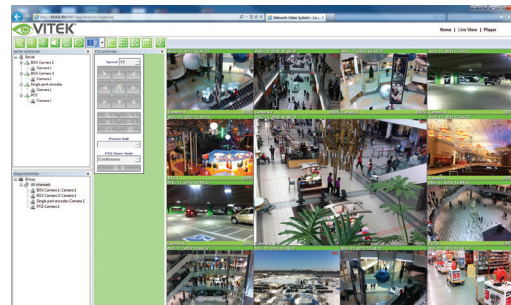
## FEATURES

- Supports up to 16 IP Cameras
- Supports up to 4x 2.0 MegaPixel cameras in real-time (30fps) / 8x 2.0 MegaPixel Cameras at 15fps/each / 16x 2.0 MegaPixel Cameras at 7.5fps/each
- Audio recording & transmission
- Configuration and control through Web browsers
- Supports up to 2TB SATA Hard Drives
- Multi-Vendor camera support
- H.264 Compression
- RS-232 via RJ-45
- Gigabit Ethernet
- Built-in motion detection
- PTZ control
- 3 Year Warranty

VT-IPSN16M is a stand-alone 16 channel high-performance network video recorder. A fully Internet Explorer browser enabled network video recorder that can display, record and playback in real time MJPEG, MPEG4 and H.264 video streams transmitted from any VITEK IP camera or video server over a TCP/IP network. It also supports other major brands of IP cameras and Video Servers including Axis, Panasonic, Mobotix, Arecont Vision, IQinvision, and Vivotek.



**ENVI Mobile App**  
ENVI Remote Viewing App for iPad/iPhone & Android Devices



Web based interface



Specifications	
Hardware	32bit Embedded CPU, Flash 8Mbytes /SDRAM: DDR2 128Mbytes, Linux version 2.6.24.4 operating system
Video compression	MJPEG, MPEG-4, H.264
Recording	2 Step frame rate, Supports Linux File system, Supports max 2 TB SATA HDD, Anti-shock system
Transmission or Recording (Single Mode)	Transmission/Recording: 120fps (when Single Mode with total channels at HD using 1000Base-T / LAN)
Transmission and Recording (Duplex)	Transmission/Recording: 120fps (when Duplex Mode with total channels at HD using 1000Base-T / LAN)
Transmission and Recording and Playback (Triplex)	Transmission/Recording: 120fps (when Triplex Mode with total channels at HD using 1000Base-T / LAN)
LAN interface	10/100/1000 BaseT Ethernet auto sensing
Serial Interface	One serial ports for console, modem(PSTN & GSM), serial input/output device, COM Port is RS-232
Management	Configurable by serial, web or telnet, Remote system update via telnet, FTP OR web browser
Developer support	Provides HTTP CGI API, ActiveX control development kit
Power Consumption	DC 12Volt , Max or Peak: 1.8 A, Normal : 1.0 A, (with Seagate Barracuda ES.2 1000Gbyte)
Operating Environment	Temperature : 32° ~ 122°F (0° ~ 50°C), Humidity : 20 ~ 80% RH(non-condensing)
Miscellaneous	Works with EN-V-R (CMS software), Dynamic IP support through IPCCTVDNS Server
Users	Live-cast for up to 16x8 Channel, Playback for up to 16 clients
Installation, management and maintenance	Installation CD and web-based configuration, Firmware upgrades over HTTP, telnet & FTP
Video access from Web browser	Video access from Web browser
Minimum Hardware Requirements	2 GHz Pentium 4, 2GB(RAM), Video Card with 256MB RAM, 1024x768 resolution, 100Mbps Network Adaptor
Minimum Software Requirements	Windows XP Pro, Internet Explorer 6.x or later
Supported protocols	HTTP, TCP/IP, FTP, Telnet, RARP, PPPoE, PAP, CHAP, DHCP, NTP, SMTP client
Approvals	KCC, FCC : Class A, CE : Class A, RoHS
Dimensions (L x W x H) / Weight	8.82" x 5.51" x 1.73" (224 x 140 x 44mm) / 2.09 lbs. (0.95kg) – w/o power supply or HDD.



Rear Connections

